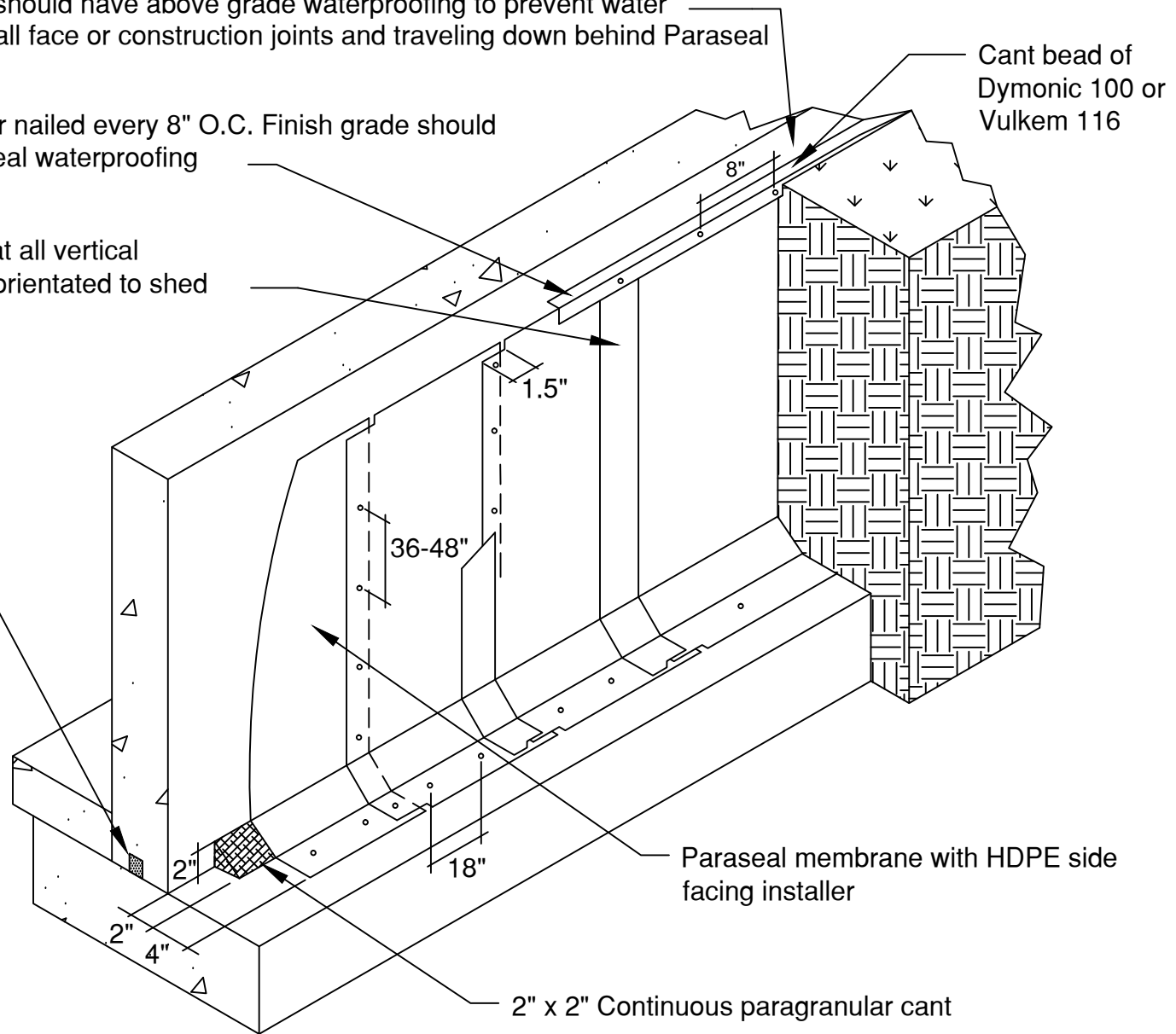


Exposed portion of wall should have above grade waterproofing to prevent water from entering through wall face or construction joints and traveling down behind Paraseal

Continuous paraterm bar nailed every 8" O.C. Finish grade should occur at or below Paraseal waterproofing

Permanent Seam Tape at all vertical seams or any seam not orientated to shed water.

Superstop waterstop install 2" in from outer face of wall



Paraseal membrane with HDPE side facing installer

2" x 2" Continuous paragrangular cant

Note: Paraseal products require a minimum 24 psf compaction/ confinement to be effective.

This detail is intended for conceptual purposes only. Detail must be reviewed by a project/design professional. See www.tremcosealants.com for the most up-to-date product information.

1	10/10/2013	Update Detail	KAB
Rev	Date	Description	By

Rev #
1

File Name:
10830

Sheet Number:
Date: 7/31/2009

Project: Backfilled Walls
Detail: Paraseal Installation w/Seams Running Vertically
Scale: None
Checked by: WH
Drawn by: KT

TREMCO
www.tremcosealants.com
3735 Green Road • Beachwood, OH 44122
Phone : 866-209-2404 * Fax : 216-766-5535