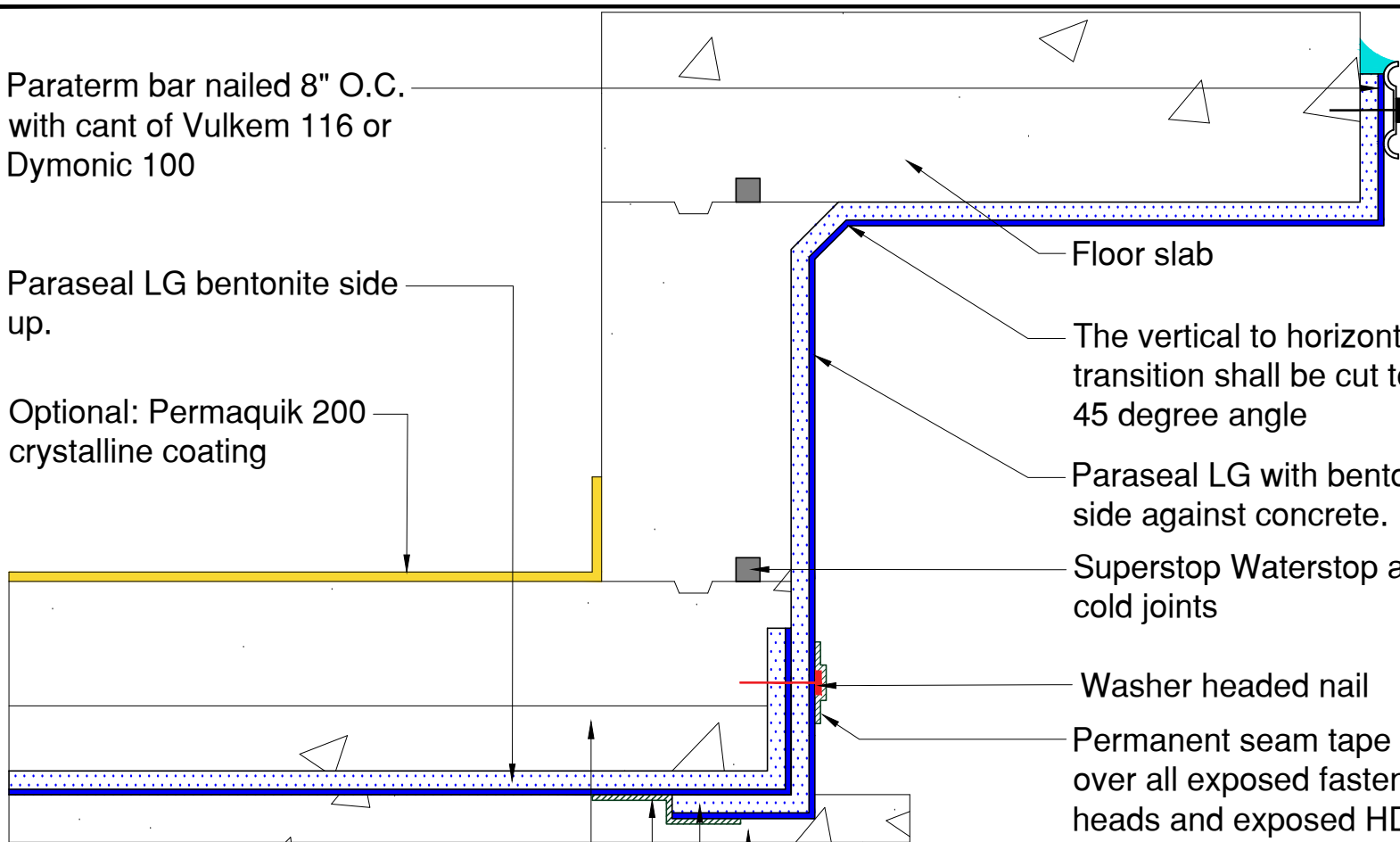


Paraterm bar nailed 8" O.C. with cant of Vulkem 116 or Dymonic 100

Paraseal LG bentonite side up.

Optional: Permaquik 200 crystalline coating



Floor slab

The vertical to horizontal transition shall be cut to a 45 degree angle

Paraseal LG with bentonite side against concrete.

Superstop Waterstop at all cold joints

Washer headed nail

Permanent seam tape over all exposed fastener heads and exposed HDPE seams

2" Sand slurry protection slab (required for slabs greater than 6" thick)

Permanent Seam Tape

12" X 12" Paraseal LG overlap required at all outside corners with bentonite facing up

Compacted base, soil or 2" Sand slurry mud slab

NOTE: Paraseal products require a min of 24 PSF of compaction/confinement in order to function as designed.

TREMCO

www.tremcosealants.com

3735 Green Road * Beachwood, OH 44122
Phone : 866-209-2404 * Fax: 216-766-5535

Detail: CAST IN PLACE ELEVATOR, SUMP OR PIT (BENTONITE SIDE UP)
(NON-SUBMERGED)

This detail is intended for conceptual purposes only.

Drawn by: MI

Checked by: JM

Scale: None

Sheet Number:

Date: 5/24/2016

File Name:

B-BSOG-09-LG20

Rev #

00