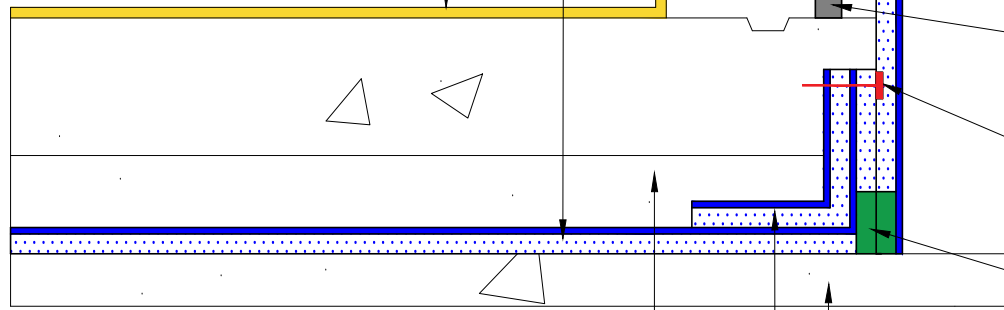


Paraterm bar nailed 8" O.C.  
with cant of Vulkem 116 or  
Dymonic 100

Paraseal GM/LG HDPE side  
up.

Optional: Permaquik 200  
crystalline coating



Floor slab

The vertical to horizontal  
transition shall be cut to a  
45 degree angle

Paraseal GM/LG with  
Bentonite side against  
concrete.

Superstop Waterstop  
at all cold joints

Washer headed nail

Two pieces of Para JT  
Tape adhered  
together to connect  
the HDPE to HDPE

2" Sand slurry protection slab (required  
for slabs greater than 6" thick)

12" X 12" Paraseal GM/LG corner strip with  
HDPE side up

Compacted base, soil or 2" Sand slurry mud slab

NOTE: Paraseal products require a min of 24 PSF of compaction/confinement in order to function as designed.

NOTE: Must be approved by Tremco for use in submerged conditions.

**TREMCO**

www.tremcosealants.com

3735 Green Road \* Beachwood, OH 44122  
Phone : 866-209-2404 \* Fax: 216-766-5535

Detail: CAST IN PLACE ELEVATOR, SUMP OR PIT (HDPE SIDE UP)

This detail is intended for conceptual purposes only.

Drawn by: MI

Checked by: JM

Scale: None

Sheet Number:

Date: 8/17/2015

File Name:

BSOG-07-GM20

Rev #

00