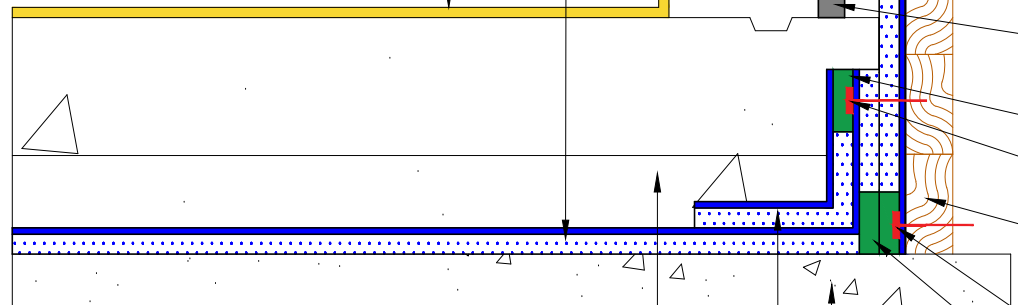


Paraterm bar nailed 8" O.C. with cant of Vulkem 116 or Dymonic 100

Paraseal GM/LG HDPE side up.

Optional: Permaquik 200 crystalline coating



Floor slab

The vertical to horizontal transition shall be cut to a 45 degree angle

Paraseal GM/LG with Bentonite side against concrete.

Superstop Waterstop at all cold joints

Para JT Tape

Washer headed nail

Lagging, Marine Grade Plywood or Cement Board

Washer headed nail

Two pieces of Para JT Tape adhered together to connect the HDPE to HDPE

2" Sand slurry protection slab (required for slabs greater than 6" thick)

12" X 12" Paraseal GM/LG corner strip with HDPE side up

Compacted base, soil or 2" Sand slurry mud slab

NOTE: Paraseal products require a min of 24 PSF of compaction/confinement in order to function as designed.

NOTE: Must be approved by Tremco for use in submerged conditions.

TREMCO

www.tremcosealants.com

3735 Green Road * Beachwood, OH 44122
Phone : 866-209-2404 * Fax: 216-766-5535

Detail: CAST IN PLACE ELEVATOR, SUMP OR PIT WITH SHORING
(HDPE SIDE UP)

This detail is intended for conceptual purposes only.

Drawn by: MI

Checked by: JM

Scale: None

Sheet Number:

Date: 8/18/2015

File Name:

BSOG-09-GM20

Rev #

00