

Reference temporary termination detail

Shotcrete wall

OPTIONAL: Paraseal GM/LG ripper strip or Tremco Protection Mat

Paraseal GM/LG bentonite facing installer

See stud clamp or threaded stud detail

Remaining tensioned tie-back boot

1/2" Superstop Waterstop at all cold joints

Optional drain system over top of footing to drain or sump

Paraseal GM/LG bentonite side up

See Paraseal GM/LG seam detail

Gaps exceeding 1/2" in width or depth to be filled with grout

Steel pile (I-Beam)

TREMDrain 1000 in non-submerged conditions or Tremco approved protection in submerged conditions

See Stud Clamp detail

Tie-back bracket

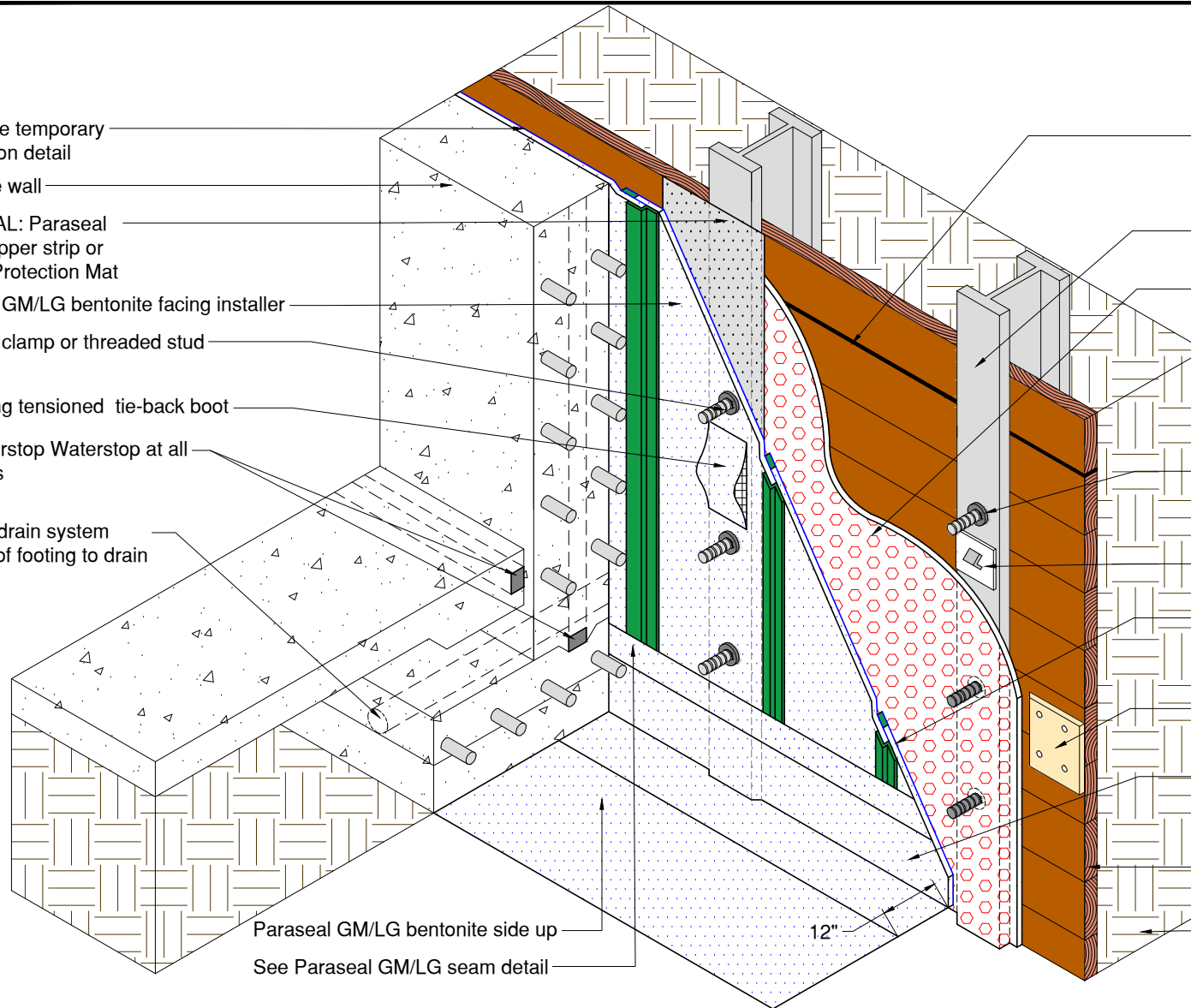
All seams shall be lapped 4" min and detailed per Tremco details

Plywood patch over void in lagging

24" Paraseal GM/LG ripper strip from (12" vertical to 12" horizontal)

Lagging

Soil



NOTE: Install a min 1/4" thick piece of 24" x 24" cement board over the steel pile prior to applying the Paraseal on any area where the steel pile will be cut later with a torch.

NOTE: Paraseal products require a min of 24 PSF of compaction/confinement in order to function as designed.

TREMCO

www.tremcosealants.com

3735 Green Road * Beachwood, OH 44122
Phone : 866-209-2404 * Fax: 216-766-5535

Detail: BLINDSIDE WALL TO BELOW SLAB ON GRADE (BENTONITE SIDE UP)

Sheet Number:

File Name:

BSW-02-GM20

Rev #

00

This detail is intended for conceptual purposes only.

Drawn by: MI

Checked by: JM

Scale: None

Date: 8/18/2015