

24" Sonotube

Foam to create keyway

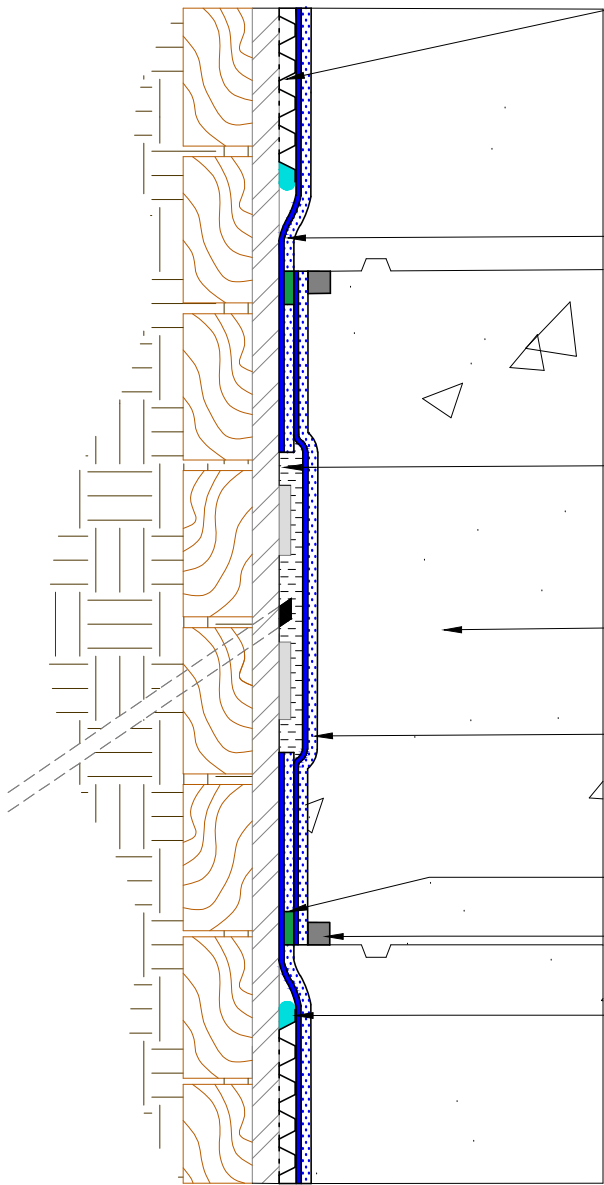
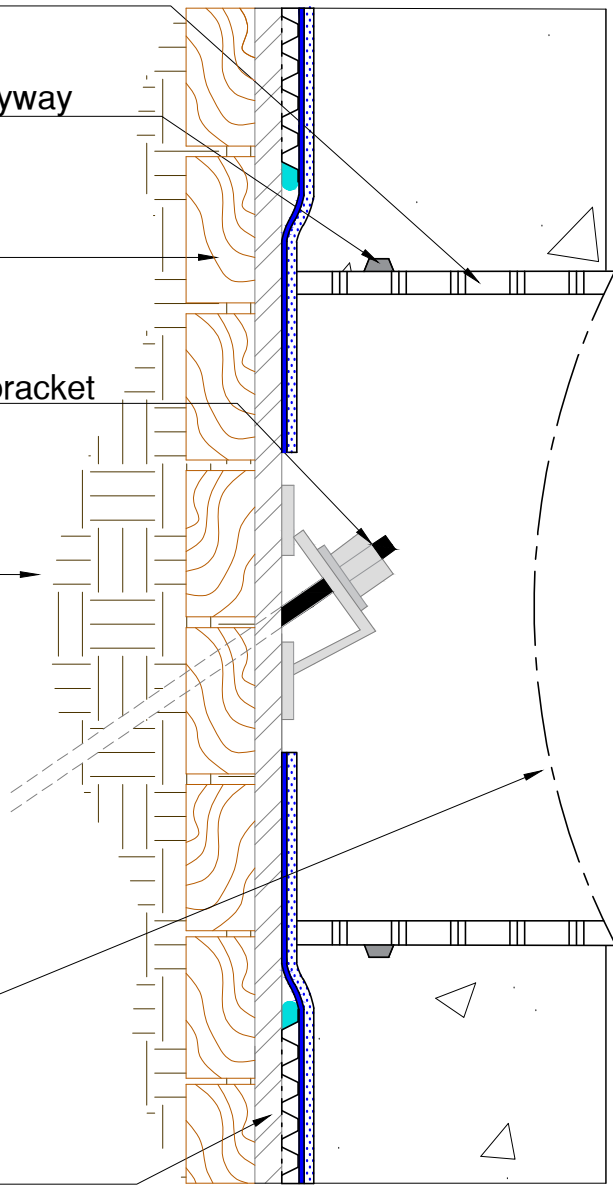
Lagging

Tie-back rod and bracket

Soil

Plastic sheeting

Steel I-beam



TREMDrain 1000 only to be applied above the water table and shall not be inside of the blockout area

Paraseal GM LG

1/4" thick layer of Paramastic over tie-back bracket

Concrete fill (see note)

Paraseal GM LG target Sheet

Para JT Tape

Superstop Waterstop

Seal full perimeter of TREMDrain with cant bead of Dymonic 100 or Vulkem 116 or TREMproof 250 GC-T

Note: Paraseal products require a min of 24 PSF of compaction/confinement in order to function as designed.

Note: In submerged conditions blockouts must be filled with grout or concrete only; no shotcrete.

TREMCO

www.tremcosealants.com

3735 Green Road * Beachwood, OH 44122
Phone : 866-209-2404 * Fax: 216-766-5535

Detail: DETENTIONED TIE-BACK - BLOCKOUT METHOD USING 24" SONOTUBE

Sheet Number:

File Name:

BSW-07-GM20

Rev #

00

This detail is intended for conceptual purposes only.

Drawn by: MI

Checked by: JM

Scale: None

Date: 8/19/2015