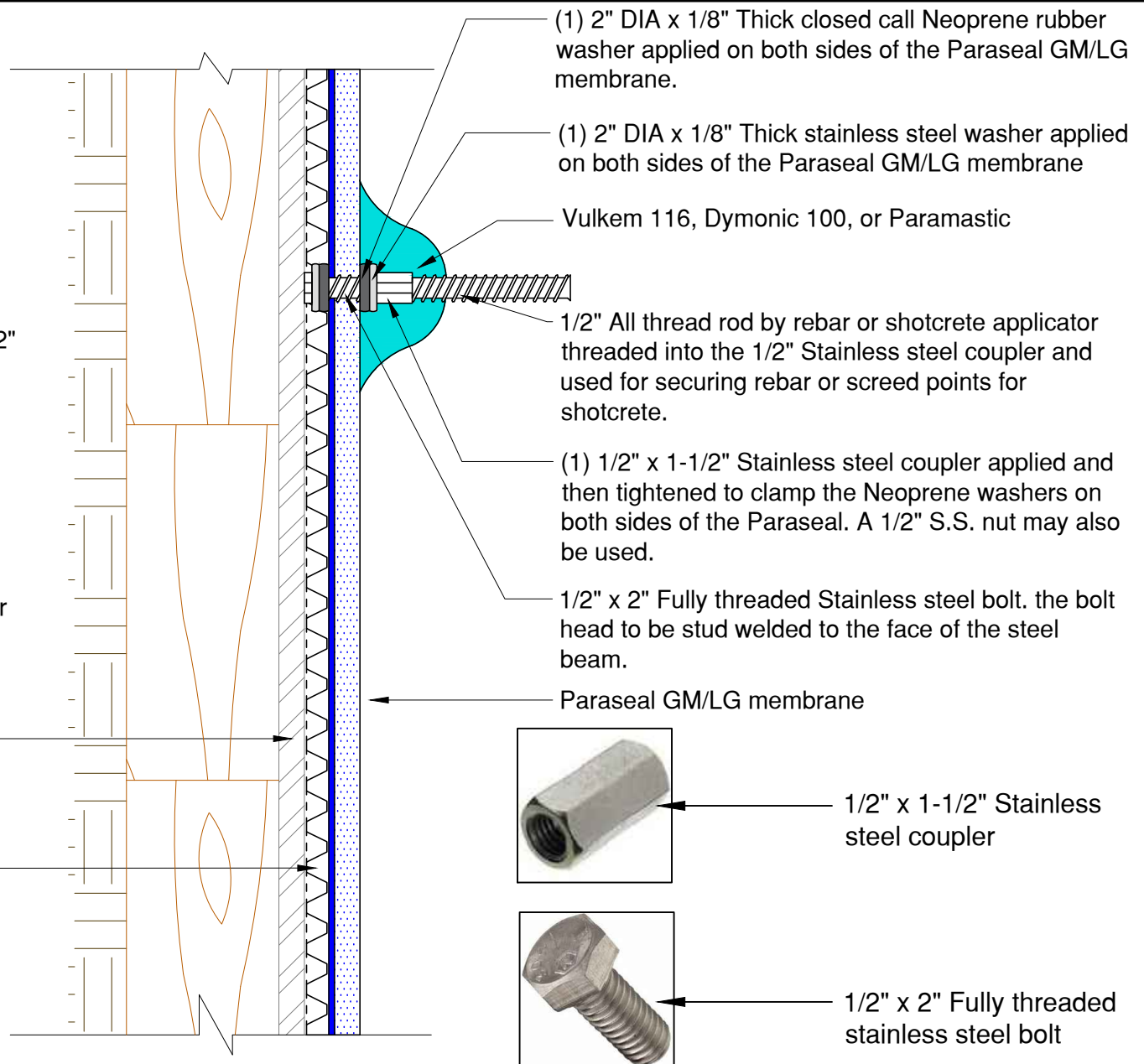


**NOTE:**

1. Weld 1/2" x 2" Stainless steel Bolt Heat to the face of the steel beam.
2. Install 1/2" DIA Stainless steel washer followed by a 1/8" thick Neoprene washer.
3. Install Paraseal GM/LG over the 1/2" bolt by punching a 1/2" hole in the Paraseal.
4. Install 1/8" Neoprene washer followed by a 1/2" DIA Stainless steel washer and 1/2" S.S nut or coupler. Firmly tighten assembly.
5. Apply Vulkem 116, Dymonic 100, or Paramastic as shown.

Steel Beam

TREMDrain 1000 only to be applied above the watertable



NOTE: Paraseal products require a min of 24 PSF of compaction/confinement in order to function as designed.



www.tremcosealants.com

3735 Green Road \* Beachwood, OH 44122  
Phone : 866-209-2404 \* Fax: 216-766-5535

Detail: STUD CLAMP WELDED TO STEEL BEAM PRIOR TO MEMBRANE

This detail is intended for conceptual purposes only.

Drawn by: MI

Checked by: JM

Scale: None

Sheet Number:

Date: 8/20/2015

File Name:

BSW-15-GM20

Rev #

00