

24" Sonotube

Foam to create keyway

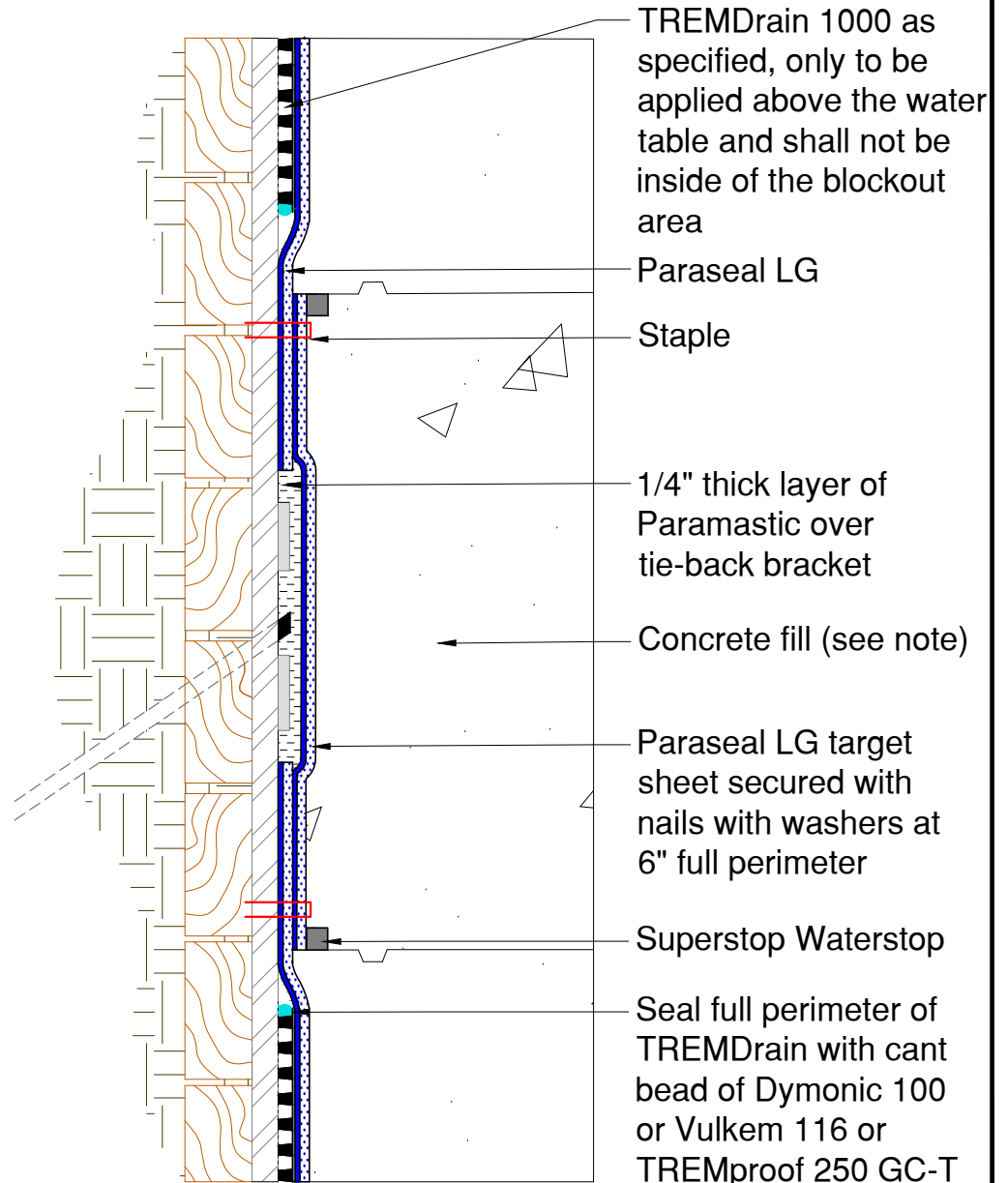
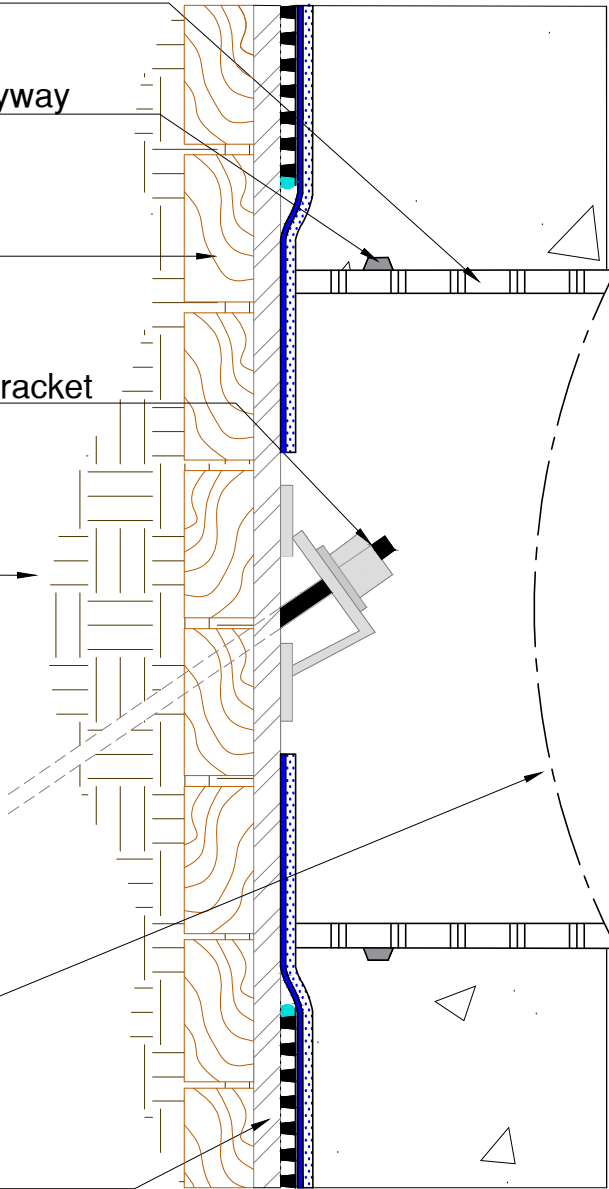
Lagging

Tie-back rod and bracket

Soil

Plastic sheeting

Steel I-beam



Note: Paraseal products require a min of 24 PSF of compaction/confinement in order to function as designed.

Note: In submerged conditions blockouts must be filled with grout or concrete only; no shotcrete.

**TREMCO**

www.tremcosealants.com

3735 Green Road \* Beachwood, OH 44122  
Phone : 866-209-2404 \* Fax: 216-766-5535

Detail: DETENTIONED TIE-BACK - BLOCKOUT METHOD USING 24" SONOTUBE

This detail is intended for conceptual purposes only.

Drawn by: MI

Checked by: JM

Scale: None

Sheet Number:

Date: 5/24/2016

File Name:

BSW-26-LG20

Rev #

00