

24" Sonotube

Foam to create keyway

Lagging

Lag bolt with bracket for scaffold tie off

Tie-back rod and bracket

Soil

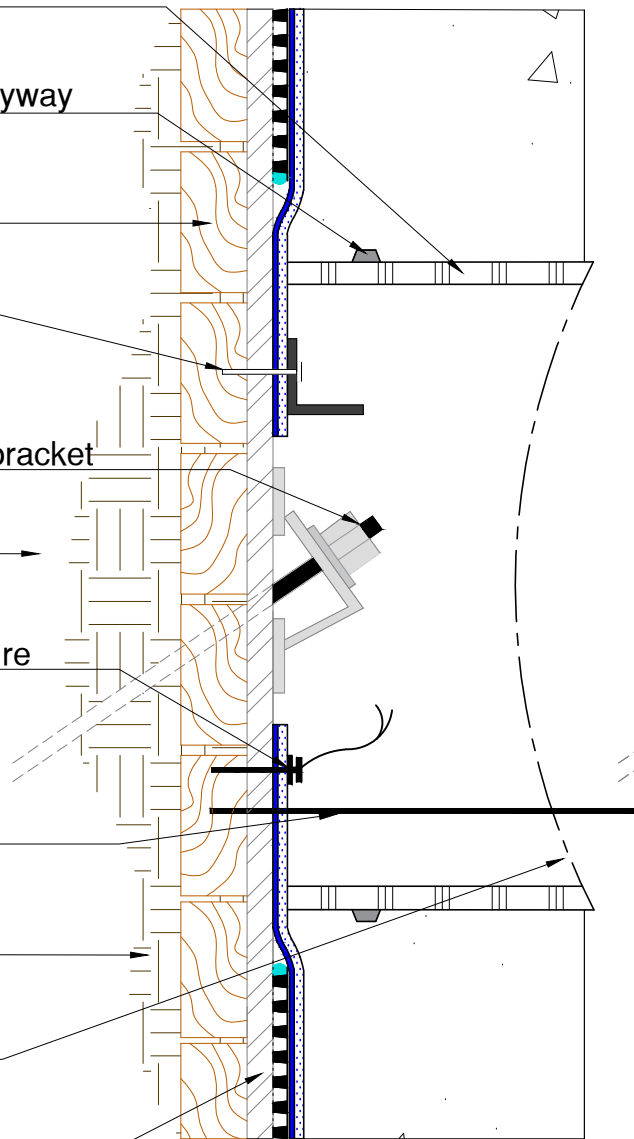
Duplex nail with wire for rebar tie off

Screed pin or rod penetration

Soil

Plastic sheeting

Steel I-beam



TREMDrain 1000 as specified, only to be applied above the water table and shall not be placed inside of the blockout area

Paraseal LG

Staple

Concrete fill (see note)

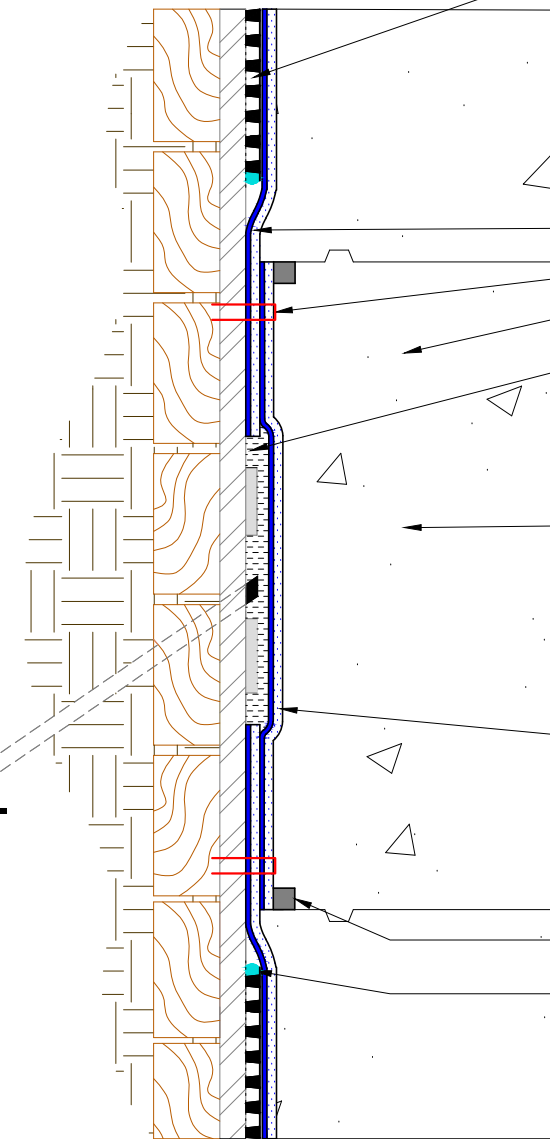
1/4" thick layer of Paramastic over tie-back bracket

Use wet fire blanket to protect the Paraseal LG when the tie-back rod and bracket are burned off

Paraseal LG target sheet secured with nails with washers full perimeter at 6" on center and covered with Parastick N Dry

Superstop Waterstop

Seal full perimeter of TREMDrain with cant bead of Dymonic 100, Vulkem 116 or TREMproof 250 GC-T



Note: Paraseal products require a min of 24 PSF of compaction/confinement in order to function as designed.

Note: Must be approved by Tremco for use in post submerged conditions.

Note: In submerged conditions blockouts must be filled with grout or concrete only; no shotcrete.

TREMCO

www.tremcosealants.com

3735 Green Road * Beachwood, OH 44122
Phone : 866-209-2404 * Fax: 216-766-5535

Detail: DETENTIONED TIE-BACK WITH BRACKET
BLOCKOUT METHOD USING 24" SONOTUBE

This detail is intended for conceptual purposes only.

Drawn by: MI

Checked by: JM

Scale: None

Sheet Number:

Date: 5/24/2016

File Name:

BSW-27-LG20

Rev #

00