

Backer Rod

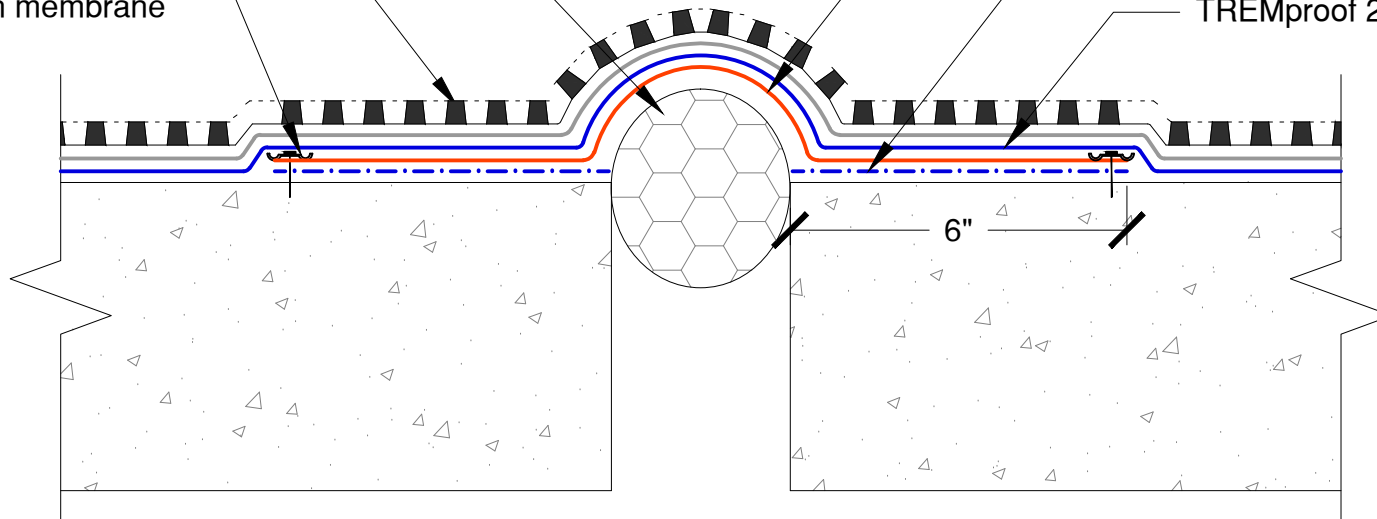
TREMDrain Drainage Mat,
as specified

Terminate TRA/Elastomeric
Sheeting with Paraterm Bar,
fully embedded in membrane

TRA or Elastomeric Sheeting,
extend a minimum of 6" on both
sides of expansion joint

Detail coat of TREMproof
201/60 at 30 mils

TREMproof 201/60



TREMCO

www.tremcosealants.com

3735 Green Road * Beachwood, OH 44122
Phone : 866-209-2404 * Fax: 216-766-5535

Detail: TREMproof 201/60 at Floor to Floor Expansion Joint with TRA/Elastomeric Sheeting

Sheet Number:

File Name:

C-201 60-EJ-FF-01

This detail is intended for conceptual purposes only.

Drawn by: KAB

Checked by: WH

Scale: None

Date: 7/25/2018