

Loop filled flush with TREMproof 201/60

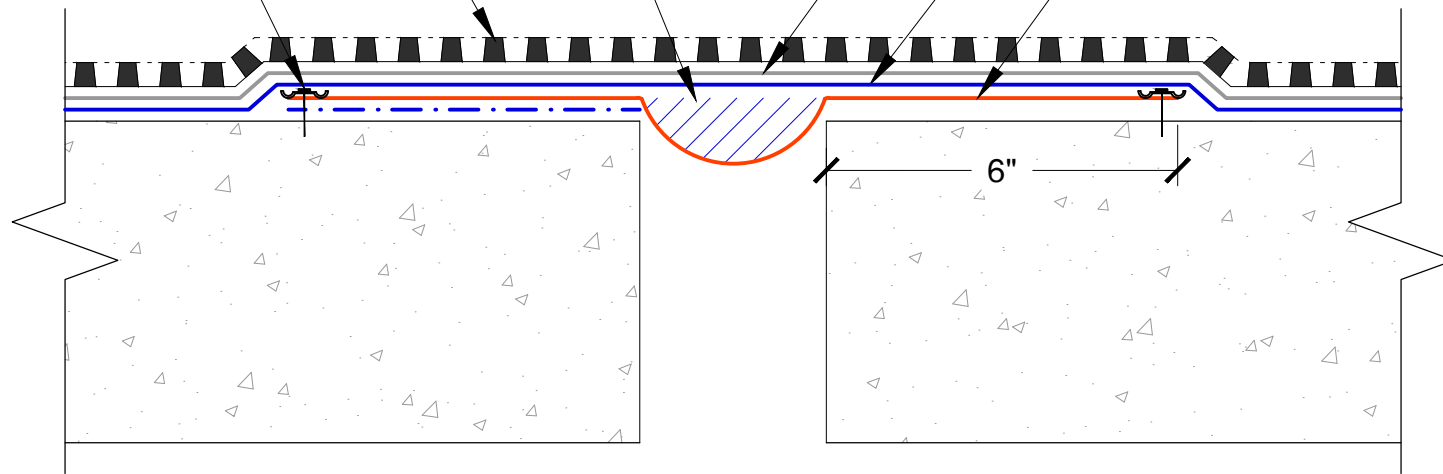
Tremco Protection Course

TREMDrain, as specified

TREMproof 201/60

Terminate both sides of TRA/Elastomeric Sheeting with Paraterm Bar

TRA or Elastomeric Sheeting embedded in detail coat of TREMproof 201/60, centered over joint



TREMCO

www.tremcosealants.com

3735 Green Road * Beachwood, OH 44122
Phone : 866-209-2404 * Fax: 216-766-5535

Project:

Detail: TREMproof 201/60 at Floor to Floor Expansion Joint Loop Filled

Sheet Number:

File Name:

C-201 60-EJ-FF-02

This detail is intended for conceptual purposes only.

Drawn by: KAB

Checked by: WH

Scale: None

Date: 7/25/2018