

TREMproof 201/60, fully encapsulate Paraterm Bar

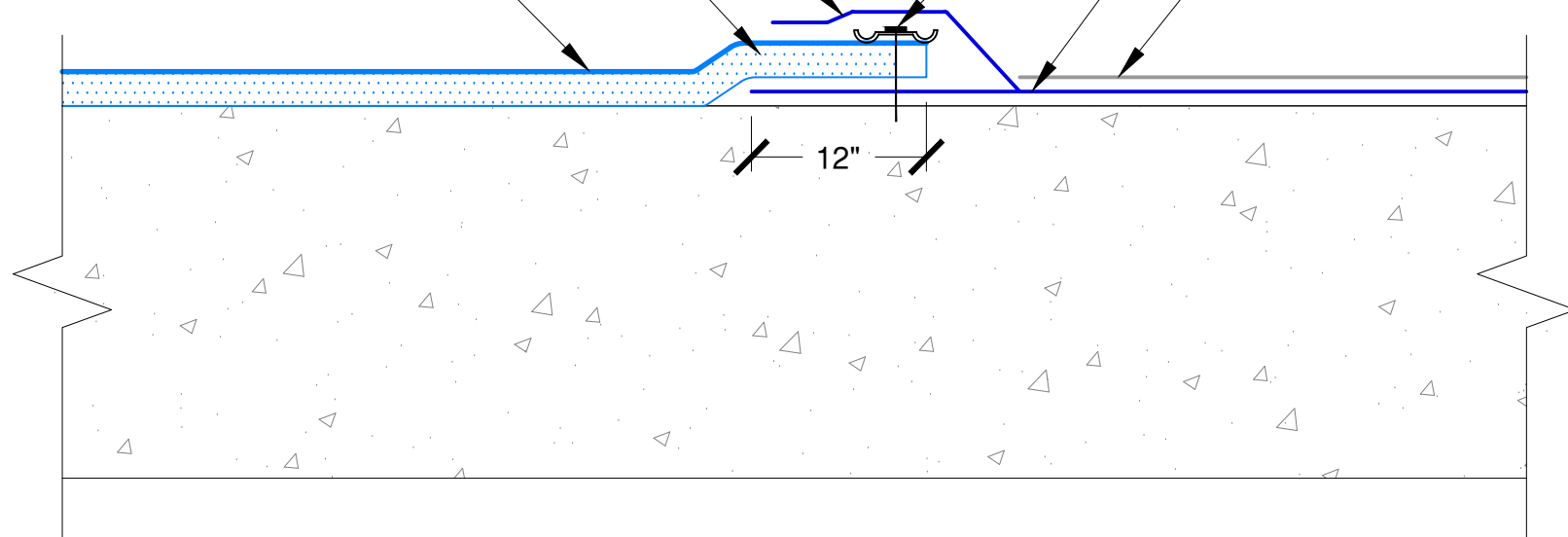
Paraseal extends 12" onto TREMproof 201/60

Paraseal (HDPE side facing installer)

Paraterm Bar fastened every 8" O.C.

TREMproof 201/60

Tremco Protection Course



Note: Paraseal products require a min 24 PSF of compaction/confinement in order to function as designed.

TREMCO

www.tremcosealants.com

3735 Green Road * Beachwood, OH 44122

Phone : 866-209-2404 * Fax: 216-766-5535

Detail: TREMproof 201/60 to Paraseal

Sheet Number:

File Name:

C-201 60-T-02

This detail is intended for conceptual purposes only.

Drawn by: KAB

Checked by: WH

Scale: None

Date: 3/12/2018