

VULKEM 346 OR 951NF
TOP COAT

VULKEM 346, 950NF 951NF OR
VULKEM EPOXY WC
INTERMEDIATE COAT W/AGGREGATE

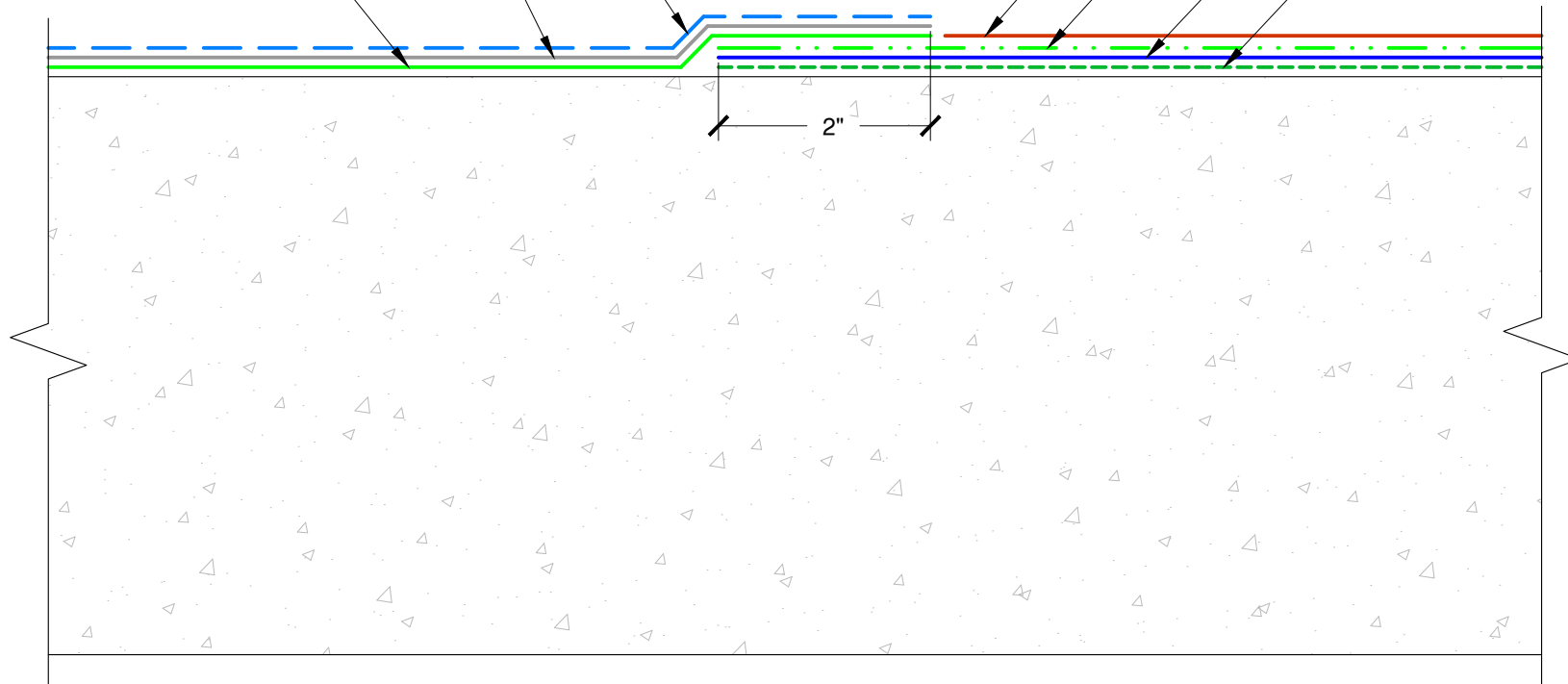
VULKEM 350NF OR 360NF
BASE COAT

TREMCO PUMA TC*

TREMCO PUMA WC*, SEEDED TO
REFUSAL WITH AGGREGATE

TREMCO PUMA BC*

TREMCO PUMA PRIMER*



NOTE: VULKEM 950 NF MAY BE USED
AS TOPCOAT IN AREAS WITH NO U.V.

*A component of the Vulkem®EWS Traffic Coating System with PUMA (polyurethane methacrylate)



3735 Green Road, Beachwood, OH 44122
Phone : 866-209-2404

Detail: Vulkem Deck Coating System to Vulkem EWS Connection

Sheet Number:

File Name:

DC-T-02

This detail is intended for conceptual purposes only.

Drawn by: KAB

Checked by: WH

Scale: None

Date: 4/21/2020