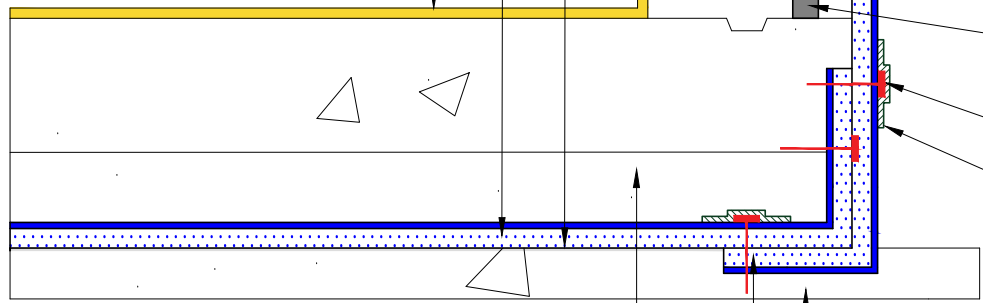


Paraterm bar nailed 8" O.C.  
with cant of Vulkem 116 or  
Dymonic 100

Minimum 6 mil polyethylene  
sheet ( Not required when a  
mud slab is placed)

Paraseal LG HDPE side up.

Optional: Permaquik 200  
crystalline coating



Floor slab

The vertical to horizontal  
transition shall be cut to a  
45 degree angle

Paraseal LG with  
Bentonite side against  
concrete.

Superstop Waterstop  
at all cold joints

Washer headed nail

All exposed fastener  
heads and HDPE  
seams to be covered  
with Permanent seam  
tape.

2" Sand slurry protection slab (required  
for slabs greater than 6" thick)

12" X 12" Paraseal LG lap required at all  
outside corners HDPE side up

Compacted base, soil or 2" Sand slurry mud slab

NOTE: Paraseal products require a min of 24 PSF of compaction/confinement in order to function as designed.

NOTE: Not recommended for use in submerged conditions.

NOTE: If Mud Slab is not placed refrain from using chipped aggregate.

**TREMCO**

www.tremcosealants.com

3735 Green Road \* Beachwood, OH 44122  
Phone : 866-209-2404 \* Fax: 216-766-5535

Detail: CAST IN PLACE ELEVATOR, SUMP OR PIT WITH BACKFILLED WALL  
(HDPE SIDE UP) (NON-SUBMERGED)

This detail is intended for conceptual purposes only.

Drawn by: MI

Checked by: JM

Scale: None

Sheet Number:

Date: 5/24/2016

File Name:

PE-BSOG-10-LG20

Rev #

00