

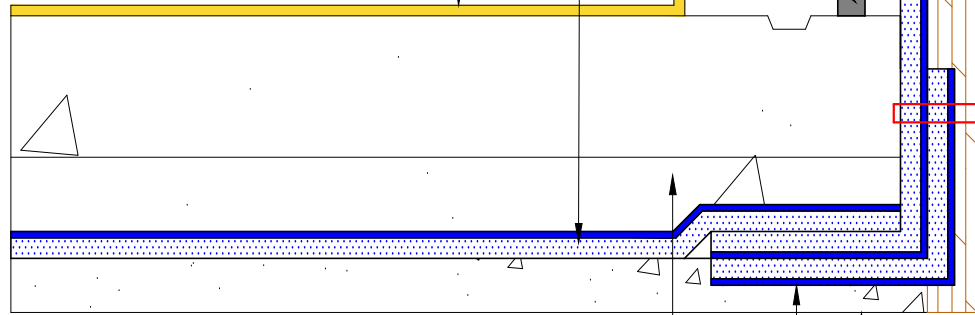
Paraterm bar nailed 8" O.C.  
with cant of Vulkem 116 or  
Dymonic 100

Lagging, treated exterior grade  
Plywood or Cement Board

Superstop Waterstop  
at all cold joints

Paraseal LG HDPE side up.

Optional: Permaquik 200  
crystalline coating



Floor slab

The vertical to horizontal  
transition shall be cut to a  
45 degree angle

Paraseal LG with  
Bentonite side against  
concrete.

Wide crown staple

2" Sand slurry protection slab (required  
for slabs greater than 6" thick)

12" X 12" Paraseal LG corner strip with  
Bentonite side up

Compacted base, soil  
or 2" Sand slurry mud  
slab

NOTE: Paraseal products require a min of 24 PSF of compaction/confinement in order to function as designed.

NOTE: Not recommended for use in submerged conditions.

NOTE: If Mud Slab is not placed refrain from using chipped aggregate.

**TREMCO**

www.tremco sealants.com

3735 Green Road \* Beachwood, OH 44122  
Phone : 866-209-2404 \* Fax: 216-766-5535

Detail: CAST IN PLACE ELEVATOR, SUMP OR PIT WITH SHORING  
(HDPE SIDE UP) (NON-SUBMERGED)

This detail is intended for conceptual purposes only.

Drawn by: MI

Checked by: JM

Scale: None

Sheet Number:

Date: 5/24/2016

File Name:

PE-BSOG-11-LG20

Rev #

00