

Reference temporary termination detail

Shotcrete or poured in place wall

OPTIONAL: Paraseal LG ripper strip or Tremco Protection Mat

Paraseal LG bentonite facing installer

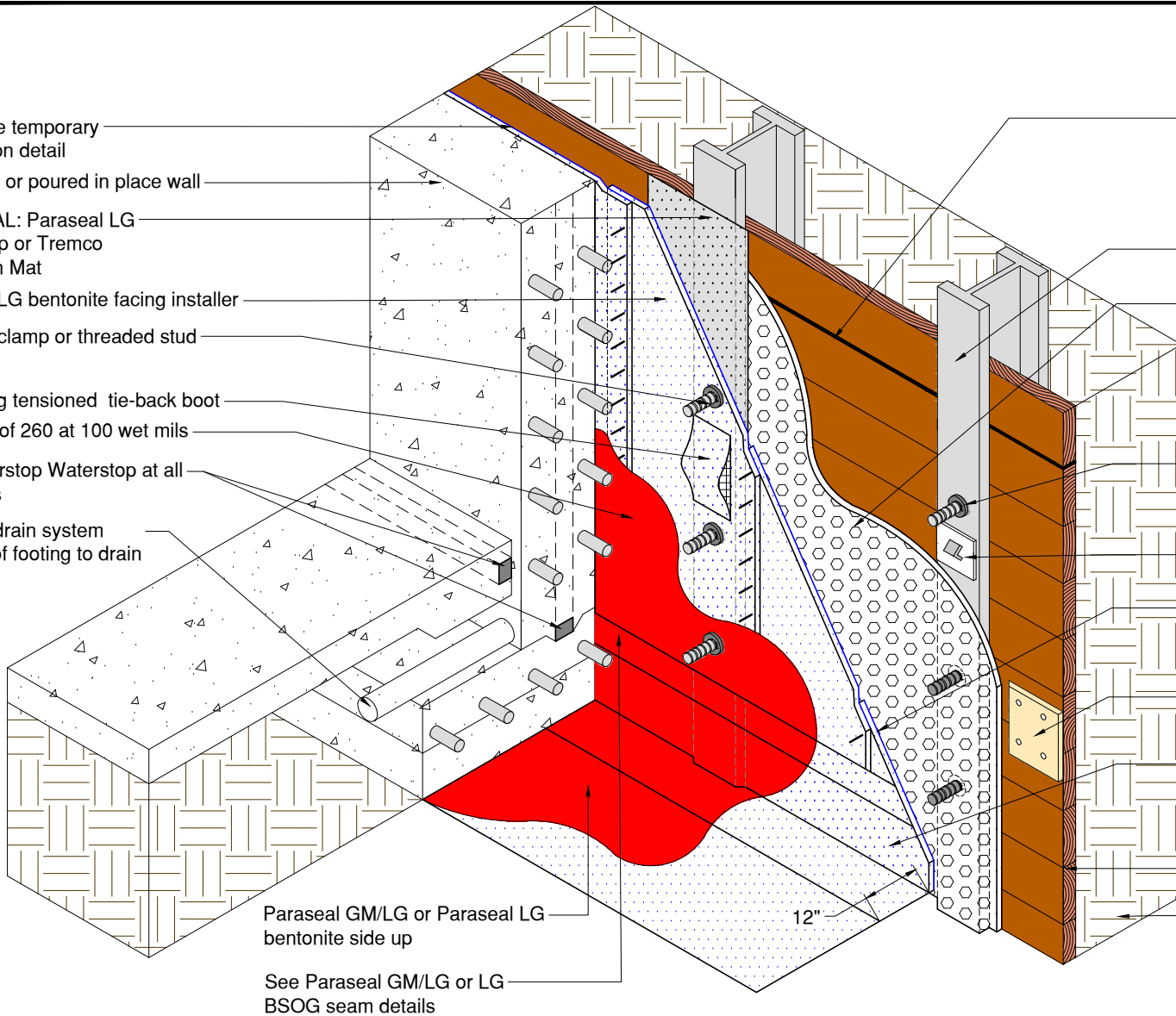
See stud clamp or threaded stud detail

Remaining tensioned tie-back boot

TREMproof 260 at 100 wet mils

1/2" Superstop Waterstop at all cold joints

Optional drain system over top of footing to drain or sump



Gaps exceeding 1/2" in height or depth and 1" in width to be filled with grout or exterior grade plywood

Steel pile (I-Beam)

TREMDrain 1000 as specified in non-submerged conditions

See Nelson stud detail

Tie-back bracket

All seams shall be lapped 4" min and detailed per Tremco details

Treated plywood patch over void in lagging

24" Paraseal GM/LG or Paraseal LG ripper strip from (12" vertical to 12" horizontal)

Lagging

Soil

Paraseal GM/LG or Paraseal LG bentonite side up

See Paraseal GM/LG or LG BSOG seam details

12"

NOTE: Paraseal products require a min of 24 PSF of compaction/confinement in order to function as designed.

NOTE: Not recommended for use in submerged conditions.

NOTE: Install a min 1/4" thick piece of 24" x 24" cement board over the steel pile prior to applying the Paraseal on any area where the steel pile will be cut later with a torch.

TREMCO

www.tremco sealants.com

3735 Green Road * Beachwood, OH 44122
Phone : 866-209-2404 * Fax: 216-766-5535

Detail: TREMproof TWS - PARASEAL LG BSW TO PARASEAL LG OR GM/LG BSOG
(BENTONITE SIDE UP) (NON-SUBMERGED)

This detail is intended for conceptual purposes only.

Drawn by: MI

Checked by: AC

Scale: None

Sheet Number:

Date: 5/27/2016

File Name:

TWS-BSOG-10

Rev #

00