

24" Sonotube

Foam to create keyway

Lagging

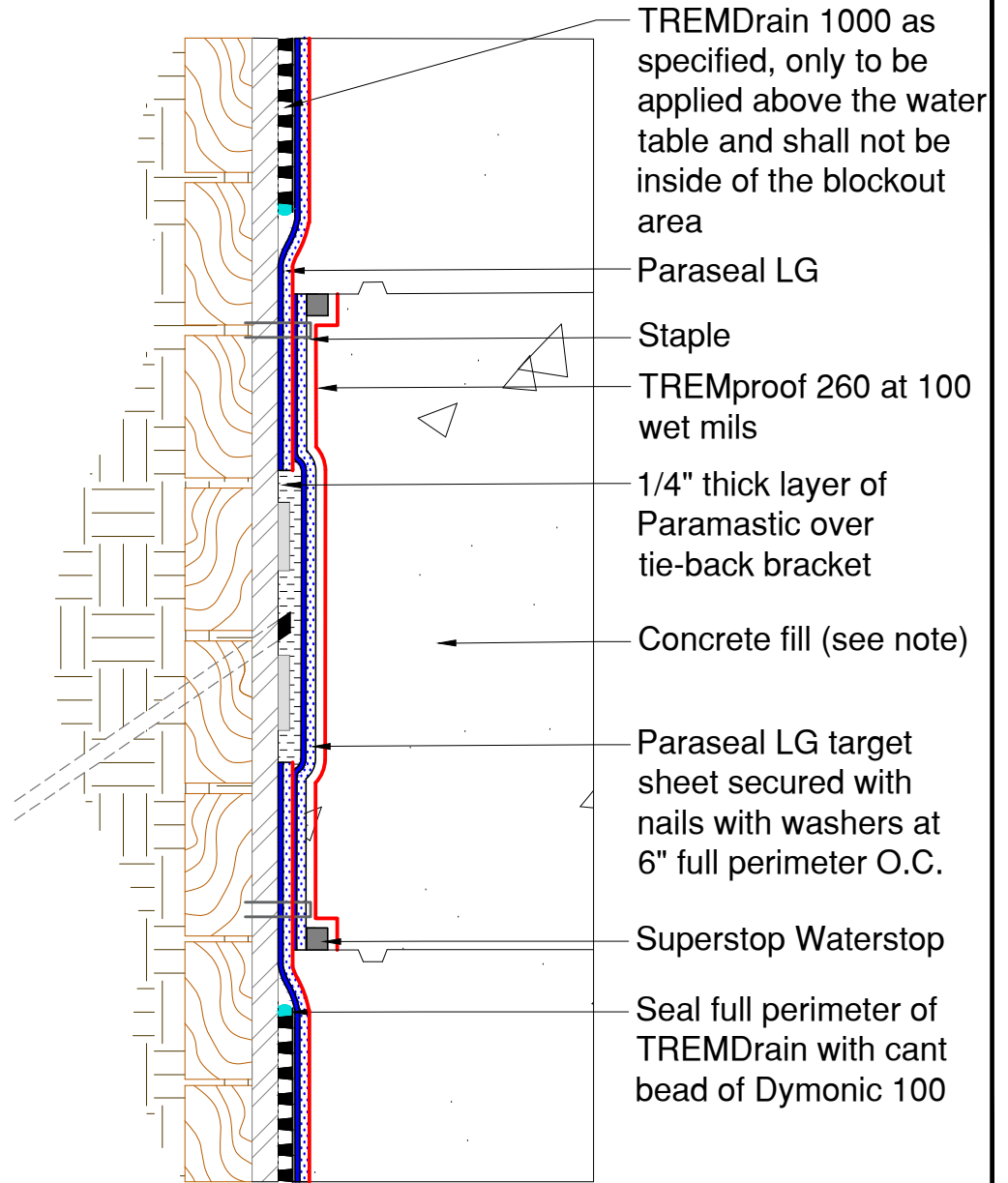
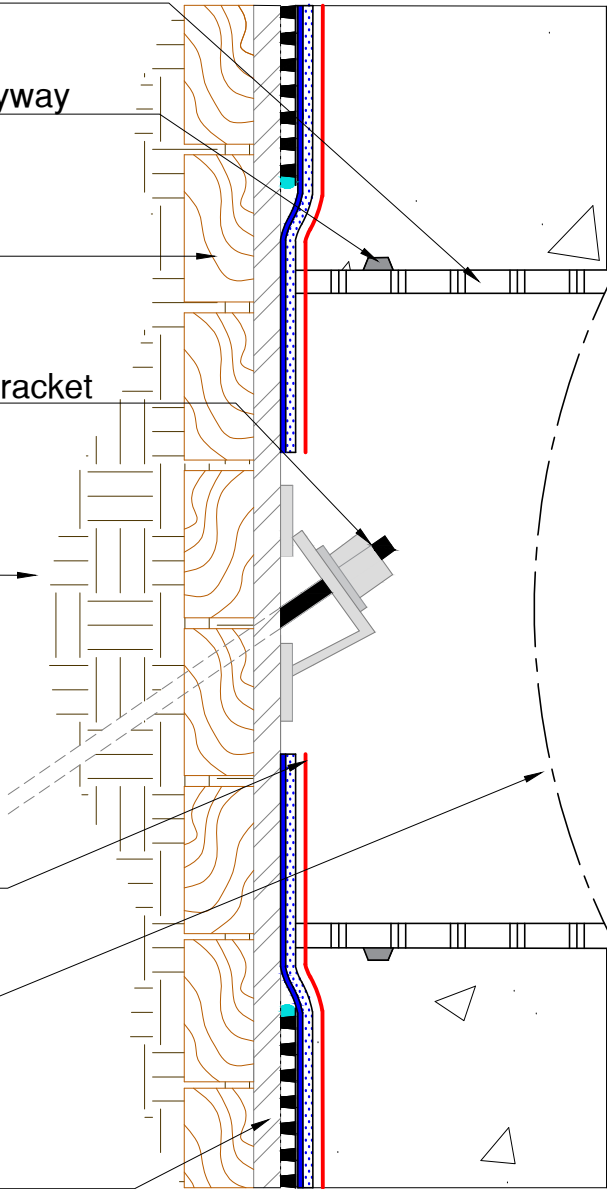
Tie-back rod and bracket

Soil

TREMproof 260 at 100 wet mils

Plastic sheeting

Steel I-beam



Note: Paraseal products require a min of 24 PSF of compaction/confinement in order to function as designed.

Note: In submerged conditions blockouts must be filled with grout or concrete only; no shotcrete.

TREMCO

www.tremcosealants.com

3735 Green Road * Beachwood, OH 44122
Phone : 866-209-2404 * Fax: 216-766-5535

Detail: TREMproof TWS - DETENTIONED TIE-BACK
- BLOCKOUT METHOD USING 24" SONOTUBE

This detail is intended for conceptual purposes only.

Drawn by: MI

Checked by: AC

Scale: None

Date: 5/27/2016

Sheet Number:

File Name:

TWS-BSW-19

Rev #

00